



# Agilent M9381A PXle Vector Signal Generator

## Application Engineering Services - Startup Assistance

Congratulations on your purchase of the world's fastest PXle vector signal generator!

Agilent offers complimentary startup assistance when you purchase the M9381A vector signal generator (VSG). This assistance is intended to help you make your first measurement.

Through this program, you will have access to a technical expert from Agilent who will familiarize you with the hardware and powerful software tools included with the M9381A VSG.

- Agilent Connection Expert (ACE)
- Soft front panel for instrument communication
- Programming examples

### Service Description

Startup assistance is flexible instruction designed to speed up your time to measurement. The goal of this assistance is to familiarize you with hardware and software tools included with the M9381A so that you can adapt it to a specific application.

We will review your learning needs in advance to determine if additional assistance may be valuable to accomplishing your project goals.

### Benefits

- **Flexible** - select topics to fit your environment.
- **Targeted** - the Agilent engineer works with you in your environment, using your system.
- **Productive** - increase speed to first measurement.



*Challenge the Boundaries of Test*

*Agilent Modular Products*

### Topics

A typical session will be based around one of the two tracks listed below. An Agilent application engineer will help you determine the most beneficial track for your environment.

#### **Track One**

- Installation of Agilent I/O libraries
- Installation of M9381A software
- Verify installation and operation of the VSG
- Overview of VSG block diagram
- Overview of the M9381A soft panel features including setting up RF carrier signals, playing ARB waveforms, using waveform markers, list mode and impairments

#### **Track Two**

- Installation of Agilent I/O libraries
- Installation of M9381A software
- Verify installation and operation of the VSG
- Overview of VSG block diagram
- Overview M9381A driver software IVI-COM and IVI-C
- Using Command Expert - fast and easy instrument control in many programming environments
- Overview of programming example

**Anticipate — Accelerate — Achieve**



**Agilent Technologies**

## Format

Agilent startup assistance is approximately one day of support, flexible in delivery and content. We recommend no more than three users for the session. Our goal is to shorten your time to first measurements. Upon purchase, Agilent will contact you to determine the most expedient way to deliver startup assistance to enable this goal.

## Related Services

The following services are also available from Agilent:

- In-house training.
- Tailored test code development to support your automation needs.
- On-site calibration and repair services.
- Advanced application support including calibration, signal creation, signal analysis and measurement science expertise.

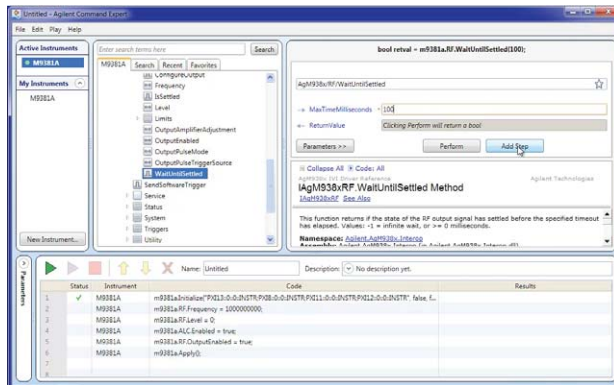


Figure 1. Getting started with Command Expert and the M9381A.

## Agilent Technologies' Test and Measurement Support, Services and Assistance

Agilent's extensive worldwide support resources and services can help you choose the right products for your applications and apply them successfully. Every instrument and system we sell has a global warranty. Support is available for at least five years beyond the production life of the product. Two concepts underlay Agilent's overall support policy: "Our Promise" and "Your Advantage."

### Our Promise

Our Promise means your Agilent test and measurement equipment will meet its advertised performance and functionality. When you are choosing new equipment, we will help you with product information, including realistic performance specifications and practical recommendations from experienced test engineers. When you use Agilent equipment, we can verify that it works properly, help with product operation, and provide basic measurement assistance for the use of specified capabilities, at no extra cost upon request. Many self-help tools are available.

### Your Advantage

Your Advantage means that Agilent offers a wide range of additional expert test and measurement services, which you can purchase according to your unique technical and business needs. Solve problems efficiently and gain a competitive edge by contracting with us for calibration, upgrades, out-of-warranty repairs, on-site education and training. We also offer services to assist with design, system integration and project management. Experienced Agilent engineers and technicians worldwide provide assistance to maximize your productivity, optimize return on investment, and obtain dependable measurement accuracy over the life of those products.

Challenge the Boundaries of Test

Agilent Modular Products



[www.agilent.com](http://www.agilent.com)

[www.agilent.com/find/modular](http://www.agilent.com/find/modular)

[www.agilent.com/find/m9381a](http://www.agilent.com/find/m9381a)

[www.agilent.com/find/assist](http://www.agilent.com/find/assist)

USA: (800) 829-4444

**Agilent Solutions Partners**

[www.agilent.com/find/solutionspartners](http://www.agilent.com/find/solutionspartners)

PICMG and the PICMG logo, CompactPCI and the CompactPCI logo, "PCIe" and "PCI EXPRESS" are registered trademarks and/or service marks of PC-SIG. Microsoft, Windows, Visual Studio, Visual C++, Visual C#, and Visual Basic are either registered trademark or trademarks of Microsoft Corporation in the United States and/or other countries.

For more information on Agilent Technologies' products, applications, or services, please contact your local Agilent office. The complete list is available at: [www.agilent.com/find/contactus](http://www.agilent.com/find/contactus)

Product specifications and descriptions in this document subject to change without notice.

© Agilent Technologies, Inc. 2012 Printed in USA, October 4, 2012  
5991-1051EN



**Agilent Technologies**